

EARLY RISER® 5 SERIES PLANTERS



EARLIER EMERGENCE. MORE UNIFORM STANDS. PHOTOCOPY PLANTS.

EARLY RISER PLANTERS FOR HIGHER YIELD POTENTIAL.

Every individual plant counts, and that's why Case IH designs equipment to help maximize yield potential. New Case IH Early Riser® 5 series planters are designed to be agronomically correct and have multiple, patented features. The legendary Early Riser row unit alone has 12 unique features that all contribute to earlier, more uniform emergence. Research data demonstrates the Early Riser row unit produces a 6 to 10 percent Net Effective Stand (NES) advantage over conventional row units. Thanks to Case IH Agronomic Design, Early Riser planters consistently produce earlier, more uniform emergence that leads to a photocopy plant stand with higher yield potential.

BE READY.





UNIFORM EMERGENCE

4-5

AGRONOMIC DRIVERS

6-7

FIRST-TO-MARKET FEATURES

8-9

EARLY RISER ROW UNIT

10-11

ADVANCED SEED METER

12-13

ADVANCED FARMING SYSTEM (AFS)

14-15

BULK FILL SYSTEM

16-17

1265 FRONT-FOLD

18-19

1255 FRONT-FOLD

20-21

1245 PIVOT TRANSPORT

22-23

1235 STACKER

24-25

1215 MOUNTED & 1225 TRAILING

26-27

ATTACHMENTS & OPTIONS

28-29

ENHANCEMENTS

30-31

AWARD WINNING

32

SYSTEMS APPROACH

33

PRODUCT SPECIFICATIONS

34-35

**FASTER TO THE FIELD. FASTER IN THE FIELD.
FASTER, MORE UNIFORM PLANT EMERGENCE.
DO YOU SEE A PATTERN HERE?**

Anyone who has ever put a crop in the ground knows if you miss your planting window, you miss your best yield opportunity. But if you sacrifice seed depth or in-row spacing accuracy for speed, you may give up even more yield due to uneven emergence. With Case IH Early Riser planters, you don't have to choose.

Early Riser planters are designed based on sound agronomic principles and extensive customer input to deliver photocopy plants. Our planters regularly work long days and get more done while providing accurate and consistent seed placement thanks to simple adjustments, higher planting speeds, fewer required stops, less daily maintenance and hassle-free transport from field to field. They offer the accuracy and flexibility you need, providing season after season of better stands, more uniform emergence, accurate populations and, in the end, higher yields.



CONSISTENTLY ACCURATE.

Getting early, even emergence starts with getting the seed into the soil with all the consistency modern engineering can provide. That's because accurate seed populations, precise seed depth control, uniform soil density and consistent in-row spacing are key to achieving early, even emergence and giving you increased profitability. And now all-new AccuStat advanced seed sensing technology can help you make immediate adjustments for optimal performance.

INCREASED PRODUCTIVITY.

When the weather clears and your optimum planting window opens, it doesn't wait for you or your equipment. Your planter has to be ready to take advantage of the time you have. The ideal planter lets you move quickly and easily from field to field, offers intuitive operation with fewer, simpler adjustments and allows you the flexibility you need to speed up planting while maintaining seed placement accuracy when bad weather is on the horizon.

MAXIMUM UPTIME.

You need a planter that lets you spend your day putting seed in the ground, not worrying about the machine that's doing it. Case IH Early Riser planters are built strong to work as hard as you do, all day long and over multiple planting seasons. And they're designed to be nimble and flexible, with fewer and easier adjustments and less daily maintenance. New features, like our AccuDrive cable seed meter drive system and redesigned bulk fill system with improved seed handling capabilities, bring more uptime, reliability and agronomic benefit than ever before.



GOING BEYOND THE PICKET FENCE – EARLY RISER PLANTERS DELIVER PHOTOCOPY STANDS.

We often hear about achieving picket fence crop stands. It's a term used to describe uniform spacing between corn plants. Many planter manufacturers focus exclusively on in-row seed spacing and accurate populations, because those two features are the easiest factors to consistently control. However, four other agronomic principles impact what many agronomists call photocopy plants, or uniformity of the plants. While both picket fence stands and photocopy plants are important, **the biggest impact on yield is photocopy plants**. Thanks to Case IH Agronomic Design, Early Riser planters consistently do both—producing earlier, more uniform emergence and higher yield potential.

Six Primary Agronomic Drivers of Seed Placement Accuracy When Planting

Producers should consider six agronomic drivers of seed placement accuracy at planting time. Depending on the type of seed and field conditions, certain drivers may have more or less importance:

1. Proper seed depth
2. Uniformly correct seed depth across the planter and throughout the field
3. Good soil-to-seed contact
4. Uniformly correct soil pressure all around the seed
5. Accurate seed population
6. Accurate in-row seed spacing

primary drivers of
Photocopy Plants:
 potential to impact corn yields by

9-22%¹

drivers of
Picket Fence Stands:
 potential to impact corn yields by

2-4%²

1. Yield impact statistics based upon *Purdue University Department of Agronomy Publication AGRY-91-01 "Stand Establishment Variability in Corn"*.
 2. Yield impact statistics based upon *Purdue University Department of Agronomy Publication AGRY-91-01 "Stand Establishment Variability in Corn"*.
 Based on a 200-bushel yield potential and 26,000 to 30,000 seeds per acre with spacing variability with standard deviation of about 2 inches.

Yield Comparison

Competitions' Definition of Accuracy – Picket Fence Stands



Case IH Definition of Accuracy – Picket Fence Stands with Photocopy Plants



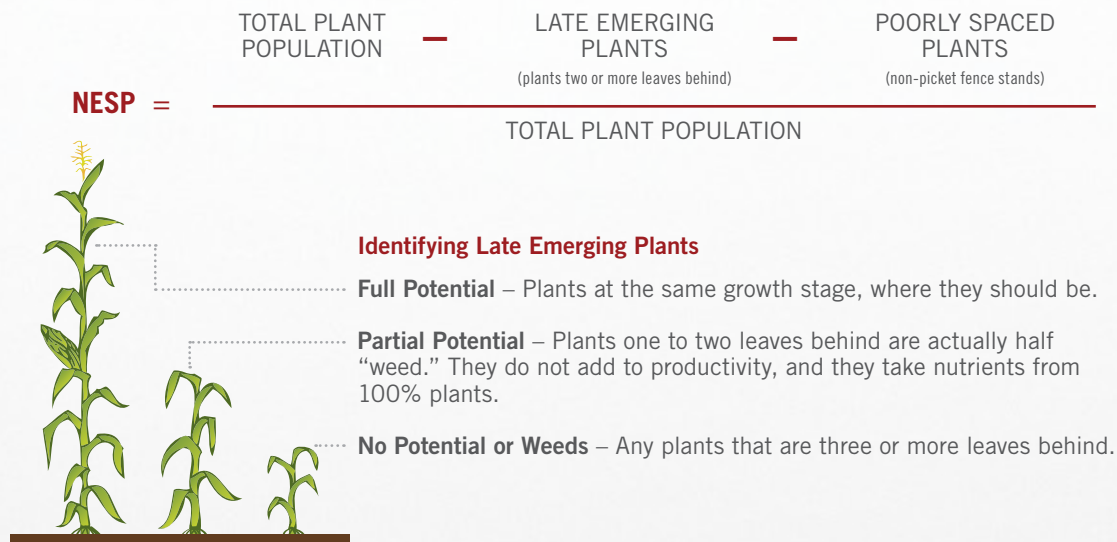
EARLY RISER PLANTER: AGRONOMIC BY DESIGN.

THE RESULT: PHOTOCOPY PLANTS

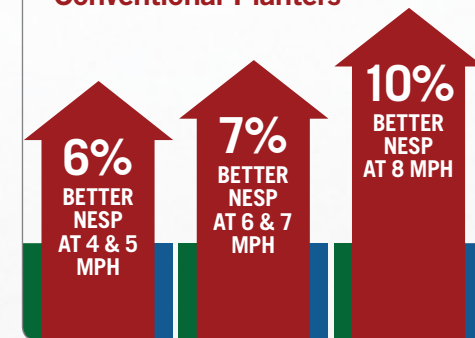
THE REWARD: INCREASED YIELD AND CASH FLOW

The Early Riser row unit has 12 unique features that all contribute to earlier, more uniform emergence. In side-by-side trials comparing the Early Riser row unit to competitors, Case IH has collected more than 162,000 measurements. Net Effective Stand Percentage (NESP) – a measure of photocopy plants – was then calculated. Data demonstrates the Early Riser row unit produces a 6 to 10 percent improvement over conventional row units. Thanks to Case IH Agronomic Design, Early Riser planters consistently produce earlier, more uniform emergence and higher yield potential.

Net Effective Stand Percentage (NESP)



NESP (Photocopy Plants) Improvement with Early Riser Planters Compared to Conventional Planters



Case IH plots in six states show the Early Riser row unit, in combination with the Advanced Seed Meter, delivers a 6-10% Net Effective Stand advantage over conventional row units.

The total Early Riser planter system provides, on average, 3 days earlier emergence and, at 4-5 mph planting speeds, 6% more photocopy plants. If planting corn at 34,000 population, that translates into 10.9 bushels/acre.

IF YOU THINK IT TAKES EXPENSIVE UPGRADES TO GET AN ACCURATE PLANTER, THEN YOU'VE NEVER OWNED AN EARLY RISER PLANTER.

Some producers spend a lot of money updating their planters with add-on equipment. Fact is, they're merely attempting to attain the agronomic prowess of the Early Riser. None, however, provide the population accuracy, placement, and most importantly, uniform emergence that are trademarks of the Early Riser. In fact, the Early Riser—without the use of a single add-on—promotes emergence, on average, 3 days earlier than the competition, with unparalleled plant stand uniformity and evenness.



CASE IH IS THE FIRST TO BRING KEY FEATURES TO MARKET—THEN AND NOW.

Look at the first-to-market features of the Early Riser planter. And see our growing list of industry exclusives. Driven by agronomic design, Case IH has pioneered planter features that deliver the functionality, efficiency and accuracy of an Early Riser without the expensive add-ons.

UNRIVALED PLANTING TECHNOLOGY

Largest Flat Seed Disc—Introduced 1999

Drops seed from the flat side of the disc. Runs slower and smoother through a wider range of speeds for greater seed placement accuracy and higher populations—up to 60,000 at 8 mph.



Patented, Adjustable Singulation System—Introduced 1999

Singulates on both sides of the seed hole, eliminating doubles and triples, and then drops the seed in the middle of the seed tube, for unmatched population and spacing accuracy.



Set-It-And-Forget-It Seed Meter System—Introduced 1999

Minimizes bothersome seed disc changes and tedious vacuum tweaks throughout the season for unmatched ease of use.

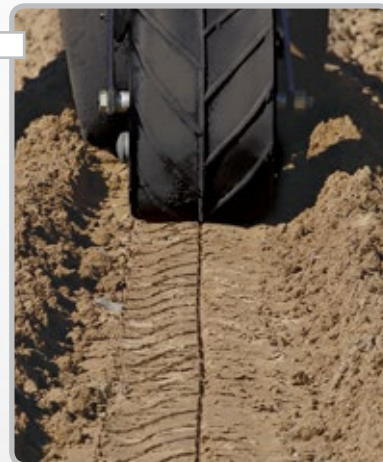
TWO-STAGE CLOSING SYSTEM

Inverted Closing Disk—Introduced 1981

The inverted disk places the moist soil from the bottom of the seed trench back on top of the seed and then gently zips the seed trench closed from the bottom up, breaking down compaction, providing uniform soil density and enhancing moisture conductivity to the seed. The disk also creates a water preference path to the root zone area for improved water management.

Zero-Pressure Ribbed Press Wheel—Introduced 1981

The zero-pressure ribbed press wheels seal the trench, preserving moisture, and provide a stress crack relief in crusting soils to aid in young plant emergence. The angled treads act as water channels, directing water to the water absorption paths created by the closing disc.



SUPERIOR PERFORMANCE

Pulled Equalizing Gauge Wheels With Soil Retention Groove—Introduced 1981

Prevent soil push and minimize row unit bounce at higher speeds, making it possible to effectively operate in adverse conditions. They also save the moist, loose soil coming out of the trench to cover the seed. Because the grooves also act as a relief area, the gauge wheels do not compress the trench wall, minimizing compaction and making it easier to create uniform soil pressure around the seed. This directly eliminates the need for row coulters to provide loose soil.

The Only True “V” Seed Trench—Introduced 1981

Furrow-firming point and seed protection shoe eliminate the loose bulk soil left in the seed trench caused by the opener disk. This allows the seed to drop to the bottom of the trench, improving depth accuracy. And, because no seed wheels or firmers are used in an attempt to press sticky coated seed into the bulk soil, seeds aren't dragged or rolled and the integrity of the seed spacing is maintained.



Narrow Leading Edge Offset Disk Openers—Introduced 1981

Penetrate the toughest soils like a sharp knife. Our 10.5-degree staggered double disk openers (versus the competition's 14-degree nose-to-nose disks) cut through soil and residue better, facilitating uniform depth and providing a narrow seed trench for less soil compaction and sidewall smear. There is no need for row coulters that poke residue into the seed zone and throw moist soil in front of the gauge wheels and opening disk, causing them to rise up which effects consistent depth.

Competitive Modifications

Competition has added all kinds of equipment to make their planters work like an Early Riser. Add-ons include coulters, spiked or heavy cast closing wheels, drag chains, special covering disks, firmers and wheels in all kinds of combinations in an attempt to provide loose soil to cover the seed, break up sidewall compaction and close the seed trench. **Yet, none can match the uniform emergence of the Early Riser row unit. After all the add-ons and claims, proof of performance depends on yield and yield boils down to “Net Effective Plant Stands” (NEPS) – or Photocopy Plants.**

OTHERS DEFINE ACCURACY AS PICKET FENCE STANDS. CASE IH GOES BEYOND AND DEFINES ACCURACY AS PHOTOCOPY STANDS:

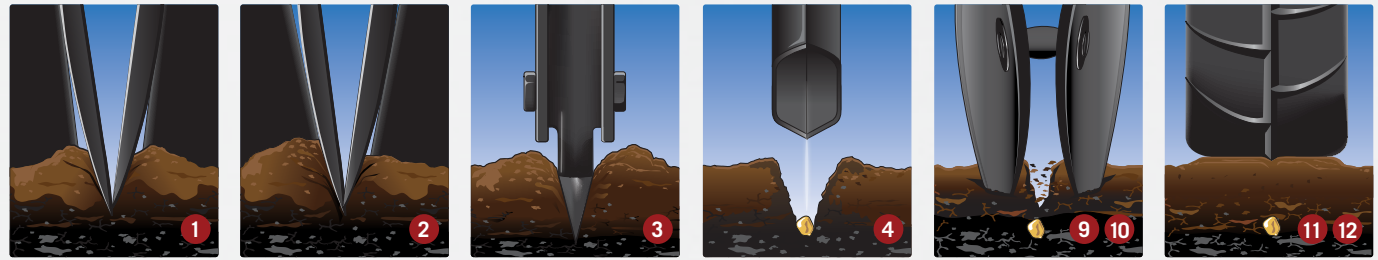
- ✓ Uniform spacing, ✓ Uniform soil-to-seed contact and soil density,
- ✓ Uniform ear length, ✓ Uniform depth, ✓ Uniform emergence

In short, Case IH defines accuracy as more than picket fence stands. The agronomic design of the Early Riser planter takes your crops beyond the picket fence and defines accuracy as photocopy plants, giving you higher yields and more profit.



12 UNIQUE FEATURES SET THE INDUSTRY STANDARD FOR EARLIER, MORE UNIFORM EMERGENCE.

Case IH Early Riser planters are designed with agronomics in mind and have multiple, patented features. The legendary Early Riser row unit has 12 unique features that all contribute to earlier, more uniform emergence (see next page), as well as the Advanced Seed Meter for accurate in-row spacing and population control.



1. NARROW, 10.5-DEGREE OPENERS.

What it does: Displaces less soil; narrower cut
Result: Less sidewall compaction than other planters with 14-degree openers
Agronomic Advantage: Minimizes compaction and seed trench smear for more robust root system

2. LEADING EDGE OFFSET OPENERS.

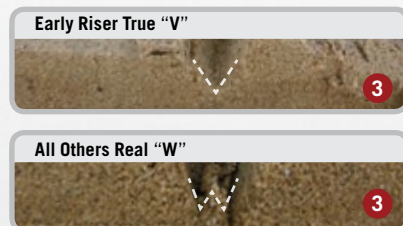
What it does: Slices through residue and penetrates hard soils
Result: Prevents residue in the furrow
Agronomic Advantage: Proper seed depth and good soil-to-seed contact

3. FURROW FORMING POINT.

What it does: Forms a clean, V-shaped trench
Result: Unlike the W-shaped trench of other planters, there's no ridge or loose soil
Agronomic Advantage: Proper seed depth and 360° uniform soil density around the seed

4. SEED PROTECTION SHOE.

What it does: Acts as a retaining wall, preventing loose soil from falling into trench before seed
Result: More uniform seed delivery to furrow
Agronomic Advantage: Uniformly correct seed depth across the planter AND throughout the field

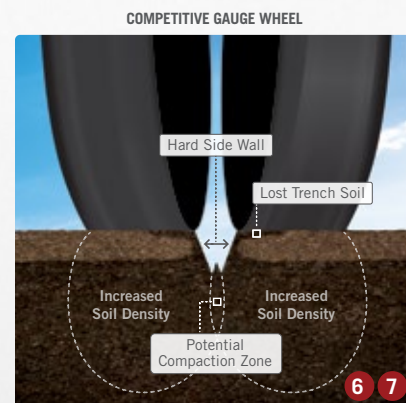


5. WALKING/PULLED GAUGE WHEELS.

What it does: Rides up and over obstacles, as opposed to hitting and bouncing over them; similar to the action of a wheel barrow being pulled vs. pushed while at the same time cutting row unit vertical travel in half
Result: Less row unit bounce; more accurate depth
Agronomic Advantage: Uniformly correct seed depth across the planter AND throughout the field

6. REDUCED INNER DIAMETER GAUGE WHEEL TIRES.

What it does: Allows displaced soil from opener to move up and out to the sides of the trench. Soil is easily folded down on top of the seed later
Result: Less sidewall compaction
Agronomic Advantage: Reduces compaction at bottom of trench for more robust root

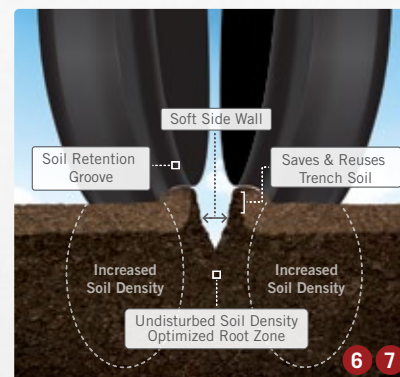


7. GAUGE WHEEL WEIGHT DISTRIBUTION

What it does: Gauge wheel profile carries row unit/planter weight 1-3/4 to 2" away from the edge of the seed trench wall
Result: Avoids compression of soil density at the base of the trench and underneath the seed, leaving the seed in a non-compacted state
Agronomic Advantage: Emerging plants are healthier, more robust and not as affected by potential tractor or planter-produced compaction.

8. ZERO INDEXED DEPTH SETTINGS.

What it does: Enables all rows to be set to the same depth at 1/8" increments
Result: All seeds planted to same depth across rows
Agronomic Advantage: Uniformly correct seed depth across the planter AND throughout the field



9. INVERTED FURROW CLOSING DISKS.

What it does: Replaces soil into furrow from both sides so moist soil covers the seed; last soil out is the first soil back in, zipping the trench from the bottom up
Result: Improved soil to seed contact and proper soil pressure around seed
Agronomic Advantage: Uniformly correct soil density all around the seed

10. INVERTED CLOSING DISK GROOVES.

What it does: Creates water infiltration paths to the root area on either side of the seed trench
Result: Rain or irrigation water goes quickly where it is needed most
Agronomic Advantage: Better water utilization and less erosion foster emergence and more robust root

11. ZERO PRESSURE, INTERNAL DUAL RIB SEALING TIRE.

What it does: Seals the trench and returns the soil to a similar condition and density as prior to the disc openers disturbing the area.
Result: Proper soil pressure 360° around seed and better utilization of moisture
Agronomic Advantage: Uniformly correct soil density; minimizes moisture evaporation

12. "CRACKING" AND WATER CHANNEL RIBS—SEALING TIPS.

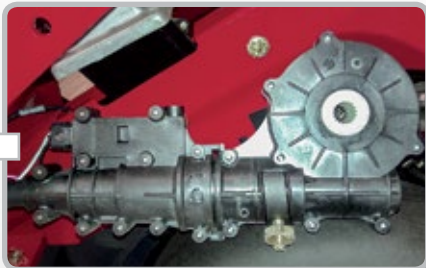
What it does: Sets soil cracking line and channels water to infiltration paths
Result: Defines soil crack in crusting conditions and controls water
Agronomic Advantage: Minimizes crusting impact on emergence, slows erosion and channels water to the root zone

CONSISTENT METERING. EXCEPTIONAL CROP VERSATILITY.

The Case IH Advanced Seed Meter (ASM) is engineered to deliver unmatched population accuracy with consistent in-row spacing and seed singulation. With the addition of the all-new AccuDrive cable drive, the ASM gets even better with more reliability and agronomic benefit than ever before. Together, ASM and AccuDrive allow producers to plant a wide variety of seed types and sizes. With the largest diameter in the industry, the ASM seed disc also offers more holes than the competition for maximum versatility at higher plant populations and faster operating speeds. It turns up to four times slower than the competition, even at higher travel speeds. And slower seed release increases accuracy – and your profit potential.

ACCUDRIVE TESTED AND READY.

The AccuDrive drive system has been precisely engineered and carefully built for accuracy, efficiency and trouble-free service in all field conditions, including no-till, minimum-tillage and more. Case IH engineers completed the equivalent of more than 40 years of durability testing on the AccuDrive assemblies. The result is the most reliable and accurate seed meter drive system in the industry. All the gear components are lubed for life and do not require any upkeep.

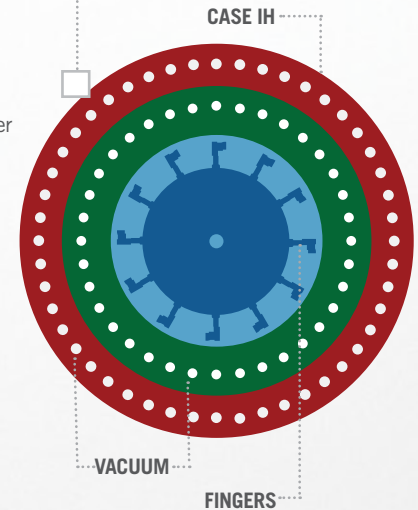


VERSATILITY FOR ALL CROPS.

The Advanced Seed Meter with AccuDrive system meters all corn hybrids and soybean varieties, along with cotton, sugar beets, peanuts, edible beans, sorghum and sunflowers. And it handles all field corn seed and soybean varieties without changing their respective seed discs or vacuum settings.

MORE HOLES. MORE ACCURACY.

Our large-diameter flat corn disks feature 48 holes – the most in the industry – for greater accuracy and efficiency. The disk rotates more slowly (minimizing centrifugal force) and smoothly, especially when planting higher populations at faster travel speeds. Our competitors' seed meters have smaller disks with fewer holes and compensate by running their seed disc faster and/or slowing down travel speed. This compromises the accuracy of seed placement and/or affects planter productivity. With the slower seed release of the Early Riser planter, you'll experience greater accuracy, increased productivity and greater profit potential.





VIRTUALLY ELIMINATES SKIPS AND DOUBLES.

The patented Case IH system with three spools singulates on each side of the seed, virtually eliminating skips and doubles and further improving in-row spacing and population accuracy.

MAKING SEED BRIDGING OBSOLETE.

An eight-fingered rotating agitator prevents treated and coated seeds from bridging at the bottom of the meter.

SEED DELIVERY. PERFECTED.

- Seed is held only by vacuum – not by seed pockets plus vacuum
- Eliminates seed tumbling, for more accurate delivery
- Seed travels precisely down the seed tube and into the furrow

SET IT AND FORGET IT.

- No seed disc changes or vacuum tweaks for corn
- ASM performs well with treated seeds
- Meter settings remain the same year after year regardless of seed size



PRODUCTIVITY AND RELIABILITY BUILT IN.

You're free to choose seed based on genetics, quality and price – not the seed size preferences of your planter. And because the ASM uses a flat-disk design, seed tumble caused by seed pockets is minimized, providing accurate seed release, more controlled seed drops and improved in-row-seed spacing. Plus, the new AccuDrive Seed Meter System has been built for efficient and trouble-free service, adding even more reliability to the Advanced Seed Meter.

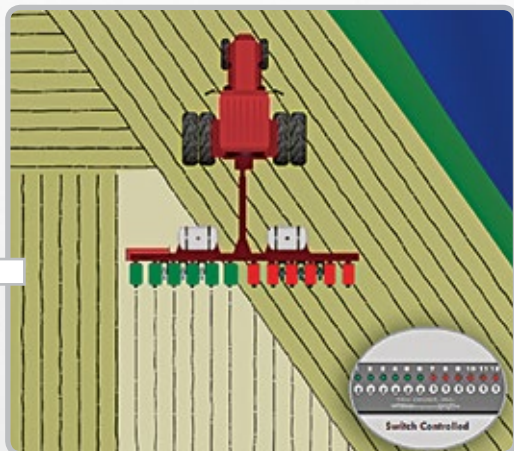
PRECISION TO MATCH YOUR NEEDS.

Case IH Early Riser planters were the first to offer variable-rate fertilizer and variable-rate seeding. If you want to reduce overlaps and skips or manage your inputs by prescription, based on soils and topography, or monitor planter performance, the Case IH Advanced Farming Systems (AFS) Pro 700 is your control center to grow your yields and improve productivity.



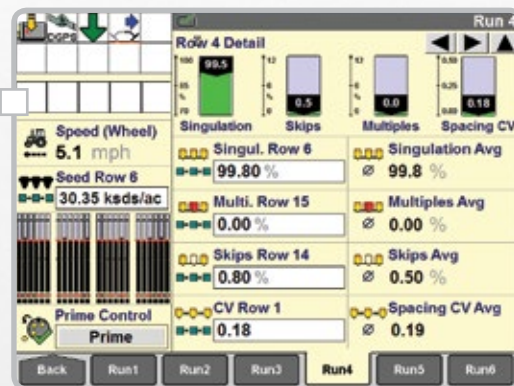
SAVE SEED WITH AFS ACCU-ROW.

Get GPS-based row unit shutoff capabilities with the AFS[®] Accu-Row control option. It automatically disengages rows when you are overlapping areas of the field that have already been planted. In addition, you also can adjust planting rates from the cab with your Case IH AFS Pro 700 control center so you can plant higher populations on your most fertile soils and save seed on less productive ground. An all-new, maintenance-free electric row clutch is positioned near the meter on each row to provide precise seed meter engagement/disengagement and single row groupings, which nearly eliminates overlap.



ALL-NEW ACCUSTAT – ADVANCED SEED SENSING AND SOFTWARE TECHNOLOGY.

An all-new seed sensor is now on all AFS-equipped Early Riser 5 series planters, allowing you to monitor and map seed activity down to each individual row live on the AFS Pro 700 control center. This high-performance seed sensor provides greater accuracy while improving upon the overall reliability of the seed sensor harness and supporting systems. The advanced Accustat software shows seed singulation, skips and multiples. It also provides the spacing coefficient of variation (CV) that gives you the ability to compare the quality of spacing between different populations. AFS AccuStat is available for corn, popcorn, sugar beets and sunflower crops.



KEEP YOUR CAB CLEAN.

Connect to GPS for field mapping and prescription farming, control row unit shutoff, and manage variable-rate seed and fertilizer placement with the help of an AFS Pro 700 control center. Just one monitor mounted at the end of your Case IH Steiger[®], Magnum[™] or Puma[®] armrest can control all planter and precision farming functions without cluttering up your cab. All-new 30 foot and larger Case IH Early Riser planters come equipped with the AFS Pro 700 control center. The 1215, 1225 and smallest 1235 come standard with the Early Riser IV display and offer the AFS Pro 700 control center as an option.



FEATURE	AFS PRO 700	EARLY RISER IV
EARLY RISER PLANTER MODELS	ALL	1210/15, 1220/25, 1230/35,& 1250/55 (12R & 16R ONLY)
Rate Sensitive Alarm	X	X
High/Low Population Warning	X	X
Seed Population	X	X
Seed Spacing	X	X
Row Failure	X	X
Average Population	X	X
Seed Counter (Row)	X	X
Seed Rate Bar (Graph)	X	X
Acre Counter (Field)	X	X
Total Acreage (Season)	X	X
Lifetime Area	X	
Ground Speed	X	X
Area/Hr	X	X
Vacuum Rate	X	
Vacuum Control	X	
Bulk Fill Fan Rate	X	X
Bulk Fill Fan Control	X	
Bin Level Indicator	X	
Metric/US Unit Support	X	X
Steerable Axle Control (1265 Only)	X	
Bin Level Alarm	X	X
Liquid Fertilizer Control - Single Channel (1245, 1255, and 1265 only)	X	
In-Cab Pneumatic Down Pressure control	X	
Maximum Number of Rows	20 Rows Per Section	36
Maximum Number of Seed Drive Sections	4	2 (Frame Box Control)
GPS Control of Seed Drive Shut-Off (Overlap & Boundary Control)	X	
GPS Control of Individual Row Shut-Off (AccuRow Control)	X	
FOLD AND ROW MARKER CONTROL	DISPLAY CONTROL	FRAME BOX CONTROL
Early Riser 1215	X	X
Early Riser 1225	X	X
Early Riser 1235	X	X
Early Riser 1245	X	
Early Riser 1255	X	X
Early Riser 1265	X	
MAP BASED PRESCRIPTION CONTROL - SEED (VARIABLE DRIVE OPTION ONLY) AND FERTILIZER		
Early Riser 1215	N/A	
Early Riser 1225	X	
Early Riser 1235	X	
Early Riser 1245	X	
Early Riser 1255	X	
Early Riser 1265	X	
Rate Recording Capable (as Applied)	X	
AccuStat: Singulation, Skips, Doubles, Spacing CV reporting & recording (12*5 series planters only)	X	
Record Position of Field Marks	X	
Video Camera Inputs (Total of Three Cameras)	X	
Compatible with Case IH Combine and Autoguidance AFS Systems	X	

Note: Case IH Early Riser series planters are not compatible with ISO11783 displays. All AFS 12*5 series planters should be operated with the AFS Pro 700 display.

BE READY FOR THE NEXT GENERATION SEED TREATMENTS AND INCREASE PRODUCTIVITY WITH OUR NEW BULK FILL SYSTEM.

Your operation needs to be running at peak efficiency throughout planting season. The all-new Case IH bulk fill system features significant enhancements to make it the best in class for inductor design, sealing, filling and hose systems. This new bulk fill system provides reliable seed delivery from the tank to the mini hopper, no matter the seed population or seed coating, so you can take advantage of the yield benefits associated with these practices. During testing, thousands of seed coatings, seed sizes and seed type combinations were tested to prove this new system. Hundreds of hours were spent running seed combinations through the bulk fill system to verify unmatched seed delivery.





THE SECRET TO THE BEST-IN-CLASS SEED DELIVERY.

At the heart of the all-new bulk fill system is the linear inductor box, located at the bottom of the bulk fill tank. The inductor seed box is where the seed from the tank and air provided by the fan meet, then travel through hoses to the mini-hoppers on the row units. It provides maximum seed delivery performance no matter what the population, seed type or seed coating.

MINI-HOPPER OPTION.

The best-in-class mini-hopper provides unmatched seed flow control during normal field operation. If planting a small plot, the mini-hopper can be filled manually with up to one gallon of seed.



QUICK CHANGEOVERS.

Simple tank cleanout allows for less seed loss and quick changeover between varieties and crop types for greater field efficiency. Tank shutoffs from the inductors and multiple small inductor doors allow you to drain high value seed without loss.

RELIABLE DELIVERY.

The bulk fill system can reliably deliver challenging seed sizes, such as sunflowers and sweet corn, adding productivity for customers who might have purchased on-row hoppers for these crops. It's stress free. Its settings are simple and do not require frequent adjustment.



EASY TANK ACCESS.

A new and improved offset ladder and platform allow easy tank access for the operator and bulk augers. For the Early Riser 1255 and 1265, there is a new scale option for exact measurement of tank fill levels, providing more productivity, especially when farming on shares or custom planting.

EASY, QUICK FILLS.

Filling bulk fill tanks to capacity is easily accomplished without pushing seed, which means less fatigue, quicker filling, less contact with seed treatments and more productivity.

BULK FILL TANK AND SEED INDUCTOR SIZES			
MODEL	TANK SIZE (QTY. 2)	INDUCTOR SIZE	SEED SUPPLY
ER1245 12R/16R	40 bu.	8 port	LH Tank Supplies LH Seed Drive, RH Tank Supplies RH Seed Drive
ER1245 12/23, 16/31	40 bu.	8 port (Splitter for each split row)	LH Tank Supplies LH Seed Drive, RH Tank Supplies RH Seed Drive
ER1245 24R20	40 bu.	8 port (Splitter used on rows 5-16)	LH Tank Supplies LH Seed Drive, RH Tank Supplies RH Seed Drive
ER1255 12R/16R	50 bu.	8 port	LH Tank Supplies LH Seed Drive, RH Tank Supplies RH Seed Drive
ER1255 24R30	60 bu.	12 port	LH Tank Supplies LH Seed Drive, RH Tank Supplies RH Seed Drive
ER1265	60 bu.	18 port	LH Tank Supplies LH Seed Drive, RH Tank Supplies RH Seed Drive

UNMATCHED STABILITY AND STRENGTH.

Get more of everything – starting with more ground planted in less time. That’s what growers tell us they need in a large-frame planter, and that’s what the largest planters in the Early Riser family deliver. With exclusive features to aid in transport and field maneuverability, the 1265 is unmatched in its field flotation, terrain flexibility and on-planter fertilizer capability—all of which is delivered on a frame that is unrivaled for its strength, stability and brawn. So, if maximum reliability and performance is important, this is the planter for you.



ROW SPACING	FRAME SIZE	SECTIONS	HYDRAULIC SEED DRIVES	MAIN FRAME / WING TIRES	WING FLEX	SECTION FLEX POINTS	TRANSPORT L x W x H	MIN HP NEEDED	MIN/MAX TRACTOR HYDRAULICS
36R 20" (508 mm)	12' x 12" (30.5 cm x 30.5 cm)	3	2	(4) 425/65R-22.5 / (4) 12.5L-15 or HD Axle 455/55R22.5 / (4) 18L x 16.1 or Steer Axle 455/55R19.5 / (4) 18L x 16.1	15°	13R-10R-13R	46' 7" x 17' 2" x 11' 11" (14.2 x 5.2 x 3.6 m) w/ markers	275 PTO hp	34 gpm w-PTO pump/69 gpm
36R 22" (559 mm)									
32R 30" (762 mm)		5	4		15° Inner Wing 20° Outer Wing	6R-7R-6R-7R-6R	54' 10" x 14' 2" x 11' 11" (16.7 x 4.3 x 3.6 m) w/ markers	255 PTO hp	
36R 30" (762 mm)					6R-9R-6R-9R-6R	56' 5" x 14' 2" x 11' 11" (17.2 x 4.3 x 3.6 m) w/ markers	275 PTO hp		

TOWS LIKE A TRAILER.

To minimize weight on the planter tongue and maximize transport stability, the 1265 features castering, dual-purpose wing gauge wheels which remain on the ground during transport. Thanks to this innovative design, a 36-row 30-inch 1265 planter puts just 3,240 pounds on the hitch, and only 2,240 pounds with the 36-row 22-inch planter. That's four times less than the competition, and it saves wear and tear on the tractor and improves transport stability. The 1265 planters have a wing flex of 15–20 degrees upward and downward. That's flexibility to follow the ground contours, even in the roughest terrain.

DUAL-PURPOSE SCISSOR HITCH.

During transport, a scissor hitch lifts the toolbar to the level position and automatically captures and locks in the wings without any additional steps or effort. While the wings are captured horizontally for safe transport, vertical travel is not restricted. So the wings are allowed to walk up and down and the frame flexes as you cross rough terrain, for less wear and tear, easier pulling and a long service life.

PATENTED STEERABLE AXLE FOR EXTRA MANEUVERABILITY.

The patented Case IH steerable rear axle option—standard on 30-in. row planters—is a smart design feature that provides exceptional maneuverability from field to field. With a steering axle in the rear, the 1265 planter follows the same path as the tractor during turns. You get access to more fields faster.



OUTSTANDING FLEXIBILITY. EVEN BETTER AGRONOMICS.

The Case IH Early Riser 1255 combines rugged durability with maximum flexibility. The compact, front-fold design and narrow transport width let you move from field to field quickly and easily. And its 21-degree wing flex gives you exceptional land-following capability.



PICK THE HITCH THAT WORKS FOR YOU.

The 16- and 24-row Early Riser 1255 planters offer two hitch options. A three-point hitch is standard for general use with row crop tractors. A drawbar hitch is available for tractors not equipped with a three point.



PROFIT FROM FERTILIZER FLEXIBILITY.

Case IH offers a range of available options for planter-applied starter fertilizer on the 1255 planter. A 400-gallon tank is available on the 12-row individual seed hopper models, and a 600-gallon capacity for the 16-row and 24-row on-row hopper models. A 400-gallon and bulk fill seed combination is available on the 24-row.

SPECIFY YOUR IDEAL CONFIGURATION.

Available in 12-, 16- and 24-row configurations with 30-inch (762 mm) spacing, you can equip the Early Riser 1255 with just the basics, or all the high-tech bells and whistles. If economy is your priority, select a standard mechanical drive, on-row hoppers and an Early Riser IV monitor on a 12- or 16- row planter. To plant by prescription and manage input costs, choose a deluxe hydraulic variable-rate drive, AFS AccuRow bulk fill seed hoppers, pneumatic row unit down pressure and an AFS Pro 700 control center.

REAP THE REWARDS OF MAXIMUM MANEUVERABILITY.

With a transport width of just 11 feet, 11 inches, you can maneuver your Early Riser 1255 on the narrowest country roads in no time, with no hassle. Ground contact tires (six tires on 12-row configurations and eight tires on 16- and 24-row configurations) create a lightweight footprint for excellent flotation and exceptional ground following capabilities. With wings that flex 21 degrees upward and downward, the Early Riser 1255 ensures exceptional land-following flexibility. That means accurate row unit depth control—regardless of terrain.



ROW SPACING	FRAME SIZE	SECTIONS	MECH OR / HYD SEED DRIVES	MAIN FRAME / WING TIRES	WING FLEX	SECTION FLEX POINTS	TRANSPORT L x W x H	MIN HP NEEDED	MIN/MAX TRACTOR HYDRAULICS
12R 30" (762 mm)	7' x 7" (18 cm x 18 cm)	3	2/2	(4) 10 x 15 Load Range D / (2) 10 x 15 8PR	21°	3R-6R-3R	27' 7" x 11' 11" x 11' 1" (8.4 x 3.6 x 3.4 m) w/ bulk fill and markers	150 PTO hp	30 gpm w-PTO pump/43 gpm
16R 30" (762 mm)				(4) 10 x 15 Load Range D / (4) 10 x 15 8PR		5R-6R-5R	32' 11" x 11' 11" x 11' 1" (10 x 3.6 x 3.4 m) w/ bulk fill and markers	180 PTO hp	31 gpm w-PTO pump/44 gpm
24R 30" (762 mm)				(4) 11 x 22.5 12PR / (4) 10 x 15 8PR		8R-8R-8R	46' 6" x 12' 3" x 11' 3" (14.2 x 3.7 x 3.4 m) w/ bulk fill and markers	230 PTO hp	32 gpm w-PTO pump/58 gpm

THE PREMIUM 1245 PUTS A TWIST ON NARROW-ROAD TRANSPORT.

Designed to easily transition from its fully operational width of 40 feet to a mere 12 feet wide, the Case IH Early Riser 1245 pivot-transport planters are incredibly easy to transport, service and store. The Early Riser 1245 family of planters allows you to quickly prepare for transport on command from the comfort of your cab. Plus, you'll reap the rewards of consistent accuracy and efficiency with our Advanced Seed Meter and Early Riser row units.



ROW SPACING	FRAME SIZE	SECTIONS	HYDRAULIC SEED DRIVES	MAIN FRAME / WING TIRES	WING FLEX	SECTION FLEX POINTS	TRANSPORT L x W x H	MIN HP NEEDED	MIN/MAX TRACTOR HYDRAULICS
12R 30" (762 mm)	7' x 7" (18 cm x 18 cm)	3	2	(4) 16.5L x 16.1 10PR / (2) 7.60 15 6PR	11°	3R-6R-3R	38' x 12' 9" x 10' (11.6 x 3.9 x 3 m) w/ gran chem	150 PTO hp	13 gpm w-PTO pump/39 gpm
4R-8R-4R						47' x 12' 9" x 10' (14.3 x 3.9 x 3 m) w/ gran chem	180 PTO hp		
12/23R 30/15" (762/381 mm)			4	(4) 16.5L x 16.1 14PR / (2) 7.60 15 6PR		5R-13R-5R	38' x 12' 9" x 10' (11.6 x 3.9 x 3 m) w/ gran chem	210 PTO hp	26 gpm w-PTO pump/58 gpm
16/31R 30/15" (762/381 mm)						7R-17R-7R	47' x 12' 9" x 10' (14.3 x 3.9 x 3 m) w/ gran chem	250 PTO hp	
24R 20" (508 mm)						6R-12R-6R		230 PTO hp	



NARROW TRANSPORT PIVOT-TRANSPORT PLANTERS.

With the press of a touch screen button, every Early Riser 1245 planter extends its retractable tongue and pivots to a narrow transport width. Press another button and the planter re-opens, extends its tongue and lowers to the ready-to-plant position. That saves you time during the critical planting period.



SPLIT-ROW PIVOT-TRANSPORT PLANTERS.

Convert from corn to soybean planting with a few simple adjustments, and get two-planters-in-one efficiency with the Early Riser 12/23 and 16/31 split-row pivot-transport planters. Plant corn in 12 or 16 30-inch (762 mm) rows, and soybeans in 23 or 31 15-inch (381 mm) rows.

NARROW-ROW PIVOT-TRANSPORT PLANTERS

Reap the potential yield and agronomic benefits of 20-inch ultra-narrow row spacing with the Early Riser 24/20 pivot-transport planter. Increased plant populations use available light more efficiently and canopy occurs earlier in the season for better weed control and decreased herbicide costs. As a result, farmers are experiencing yield advantages due to higher populations versus conventional 30-inch row spacing.

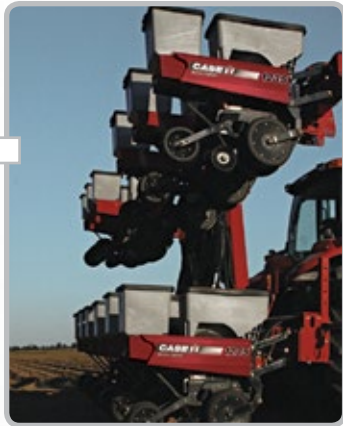
STACKABLE. TRACKABLE. PRACTICAL. PRODUCTIVE.

Move faster through your fields. Then, move faster between your fields. That's the powerful productivity edge you get with Early Riser 1235 mounted stacker planters. Case IH designed and built, the heavy-duty 1235 planter offers stack-and-go portability with in-field trackability, especially on beds and/or short headlands. Add the practical and flexible performance of the Early Riser row unit and you have a recipe for profitability. Configurations are available to meet the demands of a variety of farms, large and small, with no-till or conventional seed beds.



FASTER IN THE FIELD.

Early Riser 1235 stacker planters share the design DNA of the entire Early Riser series. Thanks to the exceptional agronomics of the Case IH Advanced Seed Meter and Early Riser row units, you can travel faster without significantly impacting seed spacing or population accuracy.



FAST, CONVENIENT STACKING.

The transport width of the 1235 planter is narrower than a rigid bar planter, and its stack-fold design keeps hoppers upright. There's no need to empty wing hoppers when moving between fields. Simply use one hydraulic remote to quickly stack wings over center.



FASTER TURNING.

Standard gull-wing packages, available on 30-foot and larger versions, provide additional wing clearance while turning and aid in leveling the unit when going back into planting position.



IMPROVED FLOTATION.

Optional dual gauge wheels are available for working on beds and/or when additional row unit flotation is required (wide row spacing only).

ROW SPACING	FRAME SIZE	SECTIONS	SEED DRIVES	WING FLEX	SECTION FLEX POINTS	TRANSPORT W x H	HITCH	MIN HP NEEDED	MAX TRACTOR HYDRAULICS
8R 38" (965 mm)	7' x 7" (18 cm x 18 cm)	3	1 Mech Std.; (1 Opt. Hyd.)	8°	2R-4R-2R	19' 4" x 11' 11" (5.9 x 3.6 m) w/ markers	Cat III or IVN	150 PTO hp	16 gpm
8R 40" (1016 mm)						21' 5" x 12' 11" (6.5 x 3.9 m) w/ markers		200 PTO hp	
12R 30" (762 mm)					2 Hyd Std.; (1 Mech Opt.)	3R-6R-3R		26' 4" x 13' (8 x 4 m) w/ markers	
12R 36" (914 mm)			4R-8R-4R					26' 10" x 13' (8.2 x 4 m) w/ markers	
12R 38" (965 mm)									
12R 40" (1016 mm)									
16R 30" (762 mm)			3 Hyd Std.; (3 Mech Opt.)						

COMPACT AND MANEUVERABLE, WITH PLENTY OF ROOM TO GROW.

Designed to give you maximum maneuverability in smaller fields, Early Riser 1215 mounted and 1225 trailing 6- and 8-row planters deliver big planter productivity and precision with a smaller footprint...and a lower investment.



MODEL	ROW SPACING	FRAME SIZE	SECTIONS	SEED DRIVES	MAIN FRAME TIRES	TRANSPORT W x H	HITCH	MIN HP NEEDED	MAX TRACTOR HYDRAULICS
1215 Early Riser	6R 30" (762 mm)	7' x 7" (18 cm x 18 cm)	1	1 Mech	N/A	19' 4" x 9' 10" (5.9 x 3 m) w/ markers	Cat III or IIIN	80 PTO hp	16 gpm
	6R 36" (914 mm)					20' 11" x 9' 4" (6.4 x 2.8 m) w/ markers			
	6R 38" (965 mm)					21' 9" x 9' 4" (6.6 x 2.8 m) w/ markers			
	6R 40" (1016 mm)					22' 9" x 9' 4" (6.7 x 2.8 m) w/ markers			
	8R 30" (762 mm)					24' 4" x 9' 4" (7.4 x 2.8 m) w/ markers		100 PTO hp	
	8R 36" (914 mm)					26' 11" x 11' 4" (8.2 x 3.5 m) w/ markers			
	8R 38" (965 mm)					28' 1" x 11' 4" (8.6 x 3.5 m) w/ markers			
	8R 40" (1016 mm)					28' 8" x 11' 4" (8.7 x 3.5 m) w/ markers			
1225 Early Riser	6R 30" (762 mm)	7' x 7" (18 cm x 18 cm)	1	1 Mech or 1 Hyd	(4) 7.60 x 15 10 PR	17' 3" x 11' 2" (5.3 x 3.4 m) w/ markers	Fixed Opt. Folding	75 PTO hp	16 gpm
	8R 30" (762 mm)					25' x 9' 5" (7.6 x 2.9 m) w/ markers		100 PTO hp	

OPTIONS TO FIT YOUR FARM.

Customize your Early Riser planter for your operation's needs. You can add attachments to facilitate liquid or dry fertilizer or insecticide application. Choose between the standard Early Riser IV monitor with mechanical seed drive for basic monitoring functions or the optional AFS Pro 700 control center for precision control.



EARLY RISER IV MONITOR

1215 RIGID MOUNTED PLANTERS: SOLID, STREAMLINED DESIGN.

Designed to give you maximum maneuverability in smaller fields, Early Riser 1215 6- and 8-row rigid mounted planters are perfect for planting cotton, small-seeded peanuts, soybeans and corn. The durable, dependable design features a 3-point mounted bar for pick-up-and-go convenience and fast, easy transport. A generous array of options are available to meet your farm's needs.



1225 RIGID TRAILING PLANTERS: GREAT THINGS COME IN SMALL PACKAGES.

Whether you have tight or terraced fields, the Case IH Early Riser 1225 planters fit the bill. Compact, streamlined, and value-featured, these machines are available in 6- and 8-row configurations with 30-inch row spacing that's perfect for smaller fields. With a rugged 7 x 7-inch (178 x 178 mm) tool bar frame and tough mechanical drive (variable-rate hydraulic drive optional), the 1225 is built for lasting durability and reliable performance.



TOOLS AND ATTACHMENTS TO FIT THE WAY YOU FARM.

Is your soil sticky, hard or rocky? What's your preferred agronomic practice – conventional, mulch till, min-till, or no-till? What mix of fertilizer and treatments do you need to promote faster, earlier seed growth? Here are some of the Early Riser attachments that can help answer those questions. Your Case IH dealer can help you spec out your planter to get the job done the way you want it.

DRY FERTILIZER AND CHEMICAL ATTACHMENTS AND OPTIONS.

DRY FERTILIZER.

Boost the potential of every plant with dry fertilizer application. Dry fertilizer hoppers hold from 600 – 900 lbs. (272 – 408 kg) each, depending on the planter configuration. Planter mounted dry fertilizer is available on 6- and 8-row trailing configurations only.

Choose from 45 different application rates and low-, high- or extra high-rate augers. Perfect for conventional- and Mulch-till conditions, the double-disk opener places your exact rate in the right place. For no-till fields, opt for the single-disk opener with 17 in. (432 mm) rippled coulter. A knife scraper can be added to keep openers clean. And optional gauge wheels allow for placement 3 or 4 in. (76 or 102 mm) deep.

GRANULAR CHEMICAL APPLICATIONS.

Control weeds and pests right from the start by applying granular treatments. Granular chemical hoppers hold 70 lbs. (32 kg) of either herbicide or insecticide, or 35 lbs. (16 kg) of each when used with a conversion divider. Large dials are easy to set and adjust to your desired rates. Several application attachments are available, based on your preferences. (Granular chemical is available on all configurations.)

For insecticide application, a front or rear insecticide spreader puts chemical in a narrow band either before and/or after the press wheel. An in-furrow hose places insecticide in the seed trench. With these various attachments you have the ability to surface apply, apply in-furrow or T-band your insecticide. And you may choose to add a closed handling Smart Box® system that reduces operator exposure.

For herbicide application, a rear-mounted herbicide spreader handles distribution over the closed furrow. Add a herbicide windshield when banding on windy days. You can follow application with a spring-tooth incorporator to help mix soil and chemicals.

DOUBLE-DISK DRY FERTILIZER OPENER



SINGLE-DISK OPENER WITH DRY FERTILIZER KNIFE



FRONT AND REAR SPREADER



DRY FERTILIZER HOPPER



GRANULAR CHEMICAL HOPPER



SMARTBOX® COMPATIBLE



BULK FILL CONVEYOR SYSTEM



CONVEYORS.

A bulk fill conveyor system is available on all 1245 configurations plus the 16R and 24R 1255. A 20' cleated belt tube conveyor extends your reach and speeds up refill. The conveyor uses an 8" belt with 1-1/4" cleats in a 6" tube. It features a 5' telescoping discharge spout, hydraulic controls at both top and bottom, and loading speeds up to 376 rpm.

LIQUID FERTILIZER ATTACHMENTS AND OPTIONS.

LIQUID FERTILIZER.

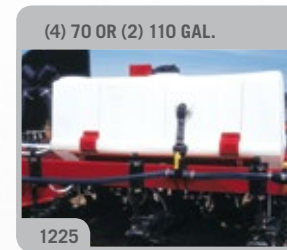
Promote faster, earlier seed growth by applying liquid starter fertilizer during planting. Large-capacity polyethylene tanks hold 70 – 600 gal. (265 – 1136 L) each and can be mounted on the toolbar or your tractor, depending on the planter configuration. A bulk fill System allows easy single-point filling. Planter mounted liquid fertilizer is available on 6- and 8-row trailing as well as 12- and 16-row on-row hopper 1245 and 1255 planters. Combination bulk fill seed and liquid fertilizer packages are available on the 24R 1255 and all models of the 1265. All bulk fill seed 1245, 1255 and 1265 planters can have fertilizer with tractor mounted tanks.

Some planter models can be equipped with a Case IH piston pump meter or a high output diaphragm pump for greater reliability and lower maintenance. The liquid pump capacities range from 5 – 25 gal. (19 – 95 L) per acre on 30 in. (762 mm) row spacing with six different orifice sizes available to match your gallons-per-acre requirement and planting speed.

Three different types of openers are available to suit different farming practices and field conditions:

- The double-disk opener works well in conventional- and mulch-till fields.
- The single-disk no-till opener with fertilizer knife features a durable, 17 in. (432 mm) rippled coulters and parallel linkage for mulch-till and no-till field conditions.
- The single-disk opener with liquid injection (pivot planters only) allows you to place fertilizer right where you need it. This opener's flex-mounted injection nozzle and 25-wave coulters work well with most soil management practices and soil types. Parallel linkage ensures stability for optimum placement.

Tractor mounted fertilizer tank and plumbing kits are also available.



BULK FILL SCALES.

New bulk fill scales give you the ability to measure the exact weight of product remaining in the tank, ensure even seed distribution between seed tanks or add only the amount of seed required to complete a field or farm. The scale option can reduce the amount of left over seed, reduce time during seed variety changeover and give you the ability to track exact seeds applied when farming on shares or custom planting. Weights appear on both the remote display and the AFS Pro 700 control center, if equipped. Available on the 1255 and 1265 models.

FOR UNIQUE SOILS AND SITUATIONS, CASE IH OFFERS ROW UNIT ATTACHMENTS AND OPTIONS.

Depending on the conditions, Case IH offers a number of row unit attachments and options designed to increase the versatility and performance of your Early Riser planter in unusual soils or situations. From heavy-duty downpressure springs that provide the extra force needed in hard soil conditions to rotary scrapers that are designed to prevent excess dirt buildup, row unit attachments and options from Case IH will help you achieve the most productive, efficient and accurate planting while also protecting your equipment.



GUARD ATTACHMENTS

To prevent residue-wrap and damage from dirt clods, guard attachments are available. The drive-wheel chain guard protects critical components from residue and clods in mulch- and no-till fields.



“V-SHAPED” FURROWING WING

This “V-shaped” furrowing wing removes the top layer of soil or clods from beds so seed is placed into moist soil. Wings are not recommended for heavy-residue conditions or in rocky or sticky soils.



BAR ROCK GUARD

With the bar rock guard, you can keep rocks from wedging between the drive wheel and gauge wheel. Used in combination with a wheel cover, this also prevents rocks and dirt clods from damaging the tire valve stem.



DOWNPRESSURE SPRING

Add a heavy-duty downpressure spring (available through Parts) to the dual closing disks for extra force to cover the seed trench in hard soils.



NARROW NO-TILL RESIDUE MANAGER

Matches performance of floating row cleaners for 30" rows. Dual managers power through the toughest residue without creating undesirable soil disturbance. High-strength steel arms can be set to float and follow the soil contour or locked down to hold the wheels firmly in place. Comes standard with depth bands.

Regular Disk Furrower



REGULAR OR NOTCHED DISK FURROWER

Disk furrowers move dry soil and residue to the side for smoother opener operation. Choose regular or notched disks depending on your conditions. Regular disks are sized 9.25 or 12 in. (234 or 304 mm) in diameter and are set nose to nose. For heavier residue conditions in mulch-till and no-till fields, opt for notched 12 in. (304 mm) disks in a staggered position. Adjust depth and blade angle to suit your situation.

Notched Disk Furrower



COMBINATION RESIDUE MANAGER COULTER

Move residue and achieve maximum soil warming in heavy strip till conditions with the combination residue manager coultter. Available on pivot-transport configurations only.



DUAL-WHEEL RESIDUE MANAGER

Sweep away residue from the path of Early Riser openers with the dual residue manager. Each 13 in. (330 mm) steel wheel has 16 fingers to clear stalks and trash out of the way. Adjust working depth shallow enough for minimal soil disruption. Available in both a fixed configuration and a floating configuration with depth bands.



ROTARY DISK SCRAPER

Available through Parts, an optional rotary scraper prevents excess dirt buildup, which is especially useful in wet or sticky soils. A heavy-duty flat scraper comes standard.



NO-TILL RESIDUE MANAGER

No-till residue managers are for heavy, no-till residue situations. Available in both a fixed configuration and a floating configuration with depth bands.



25-WAVE RIPPLED COULTER

A 25-wave coultter is available for soil warming in strip till conditions with heavy residue. An independent depth adjustment lets you control the level of tillage you desire.

VOTED NO-TILL PRODUCT OF THE YEAR TWO YEARS IN A ROW BY THE TOUGHEST CRITICS—THE OPERATOR

Operators of competitive planters often don't believe that the Early Riser planter will operate in no-till conditions without no-till coulters and special closing devices—based on their experience. But if you don't believe us, just ask the readers of *No-Till Farmer*, who for two years in a row voted the Early Riser planter the *No-Till Farmer* Product of the Year in the equipment category.



THERE'S MORE THAN JUST OUR PLANTERS WORKING IN YOUR FIELDS.

Case IH has more professionals in the field to keep you productive. Our dealers have the experience to help you manage your equipment to maximize yields and your bottom line. Parts and service technicians have the expertise to assist you before, during and after the sale. And CNH Industrial Capital will work with you to customize financing solutions to identify what works best for your needs and your farm. It's an integrated equipment, maximum service and financing system in one package. All of it focused on your operation.

KNOWLEDGEABLE DEALERS THAT WORK WITH YOU.

Your Case IH dealer understands you need an optimum return on your investment. That means fitting the right horsepower and capabilities with the tools and implements that best fit your farm. Your dealer can recommend the appropriate options package, with proper tires, weighting and ballasting packages for optimum performance. And he or she will analyze results with you, field by field.



MAXIMUM SERVICE TO GET MAXIMUM UPTIME, SEASON AFTER SEASON.

Case IH offers Max Service, the first owner's support network in the industry. And it comes with no extra cost to you. Max Service delivers manufacturer-direct assistance to you and your Case IH dealer. If you need service, parts or just have a question, Case IH staff will quickly respond to your unique situation. Your Case IH dealer already has a full-line of parts and components, full-service maintenance programs and industry-leading warranties. Max Service gives you even more resources to boost productivity with your Case IH equipment. And minimize downtime. Your complete satisfaction is our goal. Your dealer and Max Service are here for you whenever you need help at 1-877-4CASEIH.



FINANCING AND EQUIPMENT PROTECTION TAILORED TO CASE IH EQUIPMENT AND YOU.

CNH Industrial Capital is your financial connection every step of the way, and each day we help producers like you get into the right Case IH equipment to support the unique agricultural needs of your business. Specialized finance programs and flexible leasing packages put you in the driver's seat of industry-leading Case IH equipment while staying within your budget. After your purchase, keep your equipment up and running with the CNH Industrial Capital Commercial Revolving Account for your Case IH parts & service needs, and insure your equipment with our no-nonsense warranties and comprehensive protection plans. As the only finance company dedicated to Case IH, we offer the products and services designed to help you Be Ready.



EARLY RISER MODEL	1215 RIGID MOUNTED								1225 RIGID TRAILING	1235 STACKERBAR								1245 PIVOT TRANSPORT				1255 FRONT FOLD			1265 FRONT FOLD					
CONFIGURATION																														
Rows	6R	6R	6R	6R	8R	8R	8R	8R	6R	8R	8R	8R	12R	12R	12R	12R	16R	12R	16R	12/23R	16/31R	24R	12R	16R	24R	36R	36R	32R	36R	
Spacing (in.)	30"	36"	38"	40"	30"	36"	38"	40"	30"	30"	38"	40"	30"	36"	38"	40"	30"	30"	30"	30"/15"	30"/15"	20"	30"	30"	30"	20"	22"	30"	30"	
Spacing (mm)	762	914	965	1016	762	914	965	1016	762	762	965	1016	762	914	965	1016	762	762	762	762/381	762/381	508	762	762	762	508	559	762	762	
HITCH																														
2-Point Hitch	N/A																Std.			N/A										
3-Point Hitch	Standard								N/A		Standard								N/A											
Fixed Drawbar	N/A								Standard		N/A										N/A									
Folding Drawbar	N/A								Available		N/A																			
Hydraulic Telescope Drawbar	N/A										Standard										N/A		Avail.		Std.					
SEED FEEDING SYSTEM																														
On Row Hopper 1.9 bu	Standard																Optional		N/A				Optional		N/A					
Bulk Fill Standard bu	N/A																80				100		120							
Bulk Fill Weight Scale	N/A																N/A										Opt.			
DRIVES																														
Mech Trans	1 Standard								Available				Avail.		N/A				2 Available		N/A									
Hydraulic Drive	N/A								1 Available				2 Standard		3 Std.		2 Standard		4 Standard				2 Standard		4 Standard					
Dual Arm Trans Support	Standard								N/A		Standard								N/A											
Chain Guards	Available																N/A													
Rock Guards	N/A								Available		N/A																			
Hydraulic Supply ¹	N/A								14 gpm		Opt. 14 gpm		N/A				Std. 22 gpm, Opt. 36 gpm		Std. 36 gpm, Opt. 22 gpm		Opt. 14 gpm ² , Std. 22 gpm ³		Std. 22 gpm		Std. 40 gpm					
LIFT ASSIST / FLOTATION																														
Wheel Lift Assist	Available								N/A		Available				Std.		N/A													
Wing Turn Assist (Gull Wing)	N/A								N/A		N/A		Std.				N/A													
Hi Float Wing Wheels (Standard)	N/A																9.5L x 15				10L x 15		11 x 22.5		Std.		Opt.			
Steerable Axle	N/A																N/A										Opt.		Std.	
ROW UNIT																														
4.5 in. (114 mm) Gauge Wheel	Standard																N/A				Standard									
Dual Gauge Wheel	N/A		Available		N/A		Available		N/A		Available		N/A		Available		N/A													
3.5 in. (89 mm) Narrow Gauge Wheel	Optional																N/A				N/A									
Spring Down Pressure	Standard																Available													
Pneumatic Down Pressure	N/A																Standard													
Two-stage Closing System	Standard																													
AccuRow Electric Clutch (Factory) ⁴	Available																Std.		Avail.		Std.									
AccuRow Air Clutch (Dealer)	N/A																Available													
METER DRIVE																														
Chain Drive	Standard																Available													
AccuDrive Cable Drive	Available																Standard													

N/A = configuration not available. **Standard** = in base price of the planter. **Available** = multiple options available. **Available - Select** = must select one or the other. **Opt.** = option, followed by the optional specification.

EARLY RISER MODEL	1215 RIGID MOUNTED								1225 RIGID TRAILING	1235 STACKERBAR						1245 PIVOT TRANSPORT				1255 FRONT FOLD			1265 FRONT FOLD							
CONFIGURATION																														
Rows	6R	6R	6R	6R	8R	8R	8R	8R	6R	8R	8R	8R	12R	12R	12R	12R	16R	12R	16R	12/23R	16/31R	24R	12R	16R	24R	36R	36R	32R	36R	
Spacing (in.)	30"	36"	38"	40"	30"	36"	38"	40"	30"	30"	38"	40"	30"	36"	38"	40"	30"	30"	30"/15"	30"/15"	20"	30"	30"	30"	20"	22"	22"	30"	30"	
Spacing (mm)	762	914	965	1016	762	914	965	1016	762	762	965	1016	762	914	965	1016	762	762	762/381	762/381	508	762	762	762	508	559	762	762		
MARKERS																														
Markers ⁵	Available								Std.		Available						Standard													
MONITOR SYSTEM																														
Early Riser (ER) Display	Standard								Available						N/A				Available			N/A								
AFS Pro 700 Display	Available								Standard						AFS Pro 700 Only				Standard			AFS Only	AFS Pro 700 Only							
SmartBox [®] Compatible	Optional																													
GRAN CHEM																														
Gran Chem ⁶	Available (requires chain drive)																													
FERTILIZER SYSTEM																														
Rear Towing Hitch	N/A																	Available			N/A									
Dry	N/A								Opt. 1,800 lbs.		Opt. 2,400 lbs.		N/A																	
Liquid w/ Tanks On-Row Hopper	N/A								Opt. 220 gal.		Opt. 280 gal.		N/A						Opt. 400 gal.		N/A				Opt. 400 gal.		Opt. 600 gal.			
Liquid w/ Tanks Bulk-Fill	N/A																	Opt. 400 gal.			Opt. 600 gal.									
Liquid w/o Tanks (Tractor Mtd. Tanks)	N/A												Available																	
FERTILIZER COULTERS																														
Double Disk	N/A								Available		N/A						Available				N/A									
NoTill Knife	N/A								Available		N/A						Available				N/A									
NoTill Injector	N/A																	Available				N/A								
Single Disk	N/A																	Available			N/A									
ROW UNIT TILLAGE																														
9.25" Furrowing Disk	Available																	Field Option			Factory installed									
12" Furrowing Disk	Available																	Field Option			Factory installed									
12" Notched Disk	Available																	Field Option			Factory installed									
V-Wings	N/A								Available																					
Tine Teeth	Available																	Field Option			Factory installed									
25 Wave Coultter	Available																	Available ⁷			Available									
NonFloat Tine Residue Mgr	Available																	Available												
NonFloat NoTill Residue Mgr	Available																	Available												
Floating Tine Residue Mgr	N/A								Available ⁸						Available ⁷			Available												
Floating NoTill Residue Mgr	N/A								Available ⁸						Available ⁷			Available												
Floating Tine Residue Mgr w/ Coultter	N/A								Available ⁸						N/A															
Floating NoTill Residue Mgr w/ Coultter	N/A								Available ⁸						N/A															

* SmartBox is a trademark of AMVAC Chemical Corporation.

¹ Direct Drive (Tractor supplied hydraulics) available on all models.

⁴ For use only with AccuDrive cable meter drive.

⁶ Gran Chem comes with a 70 lb. box capacity and (1) meter. The box can be split and dual meters installed. Factory Gran Chem only available with Chain Driven Advanced Seed Meters. Not for use with AccuDrive. SmartBox mounting supports available through parts for use with AccuDrive.

⁷ Not available when single disk fertilizer coulters are used.

² ERIV display - Opt. 14 gpm.

⁵ Available deduct for all standard markers.

⁸ Not available when double disk fertilizer coulters are used.

³ AFS display - Std. 22 gpm.



SAFETY NEVER HURTS!TM Always read the Operator's Manual before operating any equipment. Inspect equipment before using it, and be sure it is operating properly. Follow the product safety signs, and use any safety features provided. CNH Industrial America LLC reserves the right to make improvements in design and changes in specifications at any time without notice and without incurring any obligation to install them on units previously sold. Specifications, descriptions and illustrative material herein are as accurate as known at time of publication, but are subject to change without notice. Availability of some models and equipment builds varies according to the country in which the equipment is used.
©2014 CNH Industrial America LLC. All rights reserved. Case IH is a trademark registered in the United States and many other countries, owned by or licensed to CNH Industrial N.V., its subsidiaries or affiliates.
Printed in U.S.A. www.caseih.com

CIH01031401